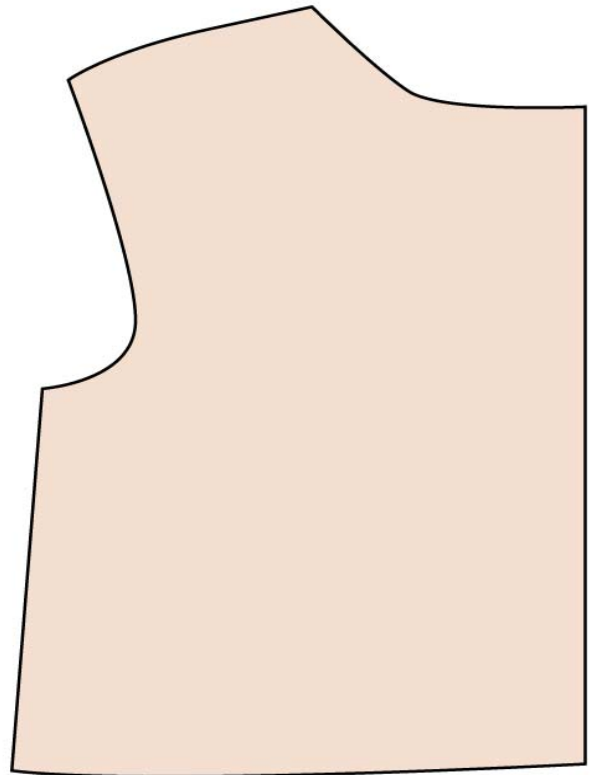


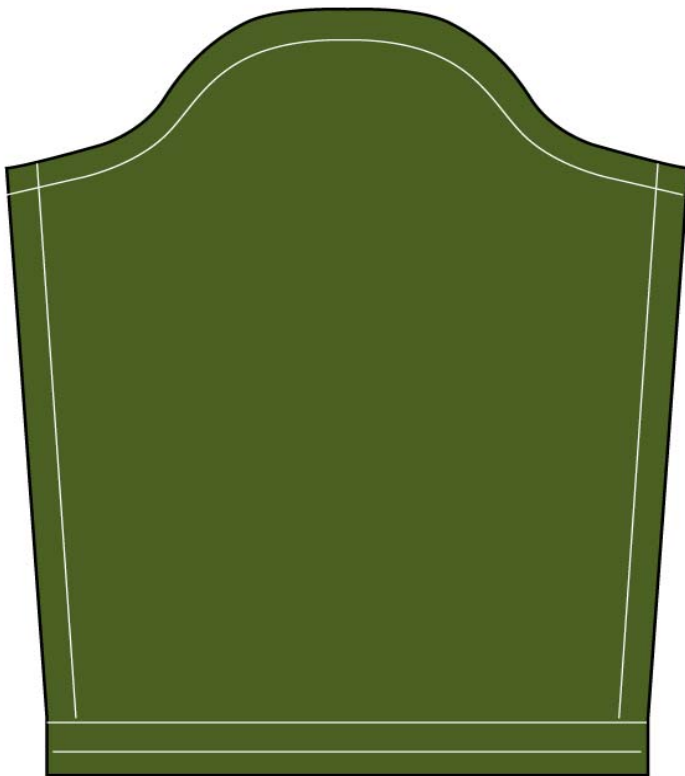
## Shirt Front

Cut 1 of cotton (on fold) for lining  
Cut 1 of velvet (also on fold)



## Shirt Back

Cut 2 of cotton for lining  
cut 2 of velvet for the visible portion of garment



## Sleeve

Cut 2 of velvet or cotton

# 18" Doll Shirt

\*use a 1/4 inch (6mm) seam.

Measurement Tool

