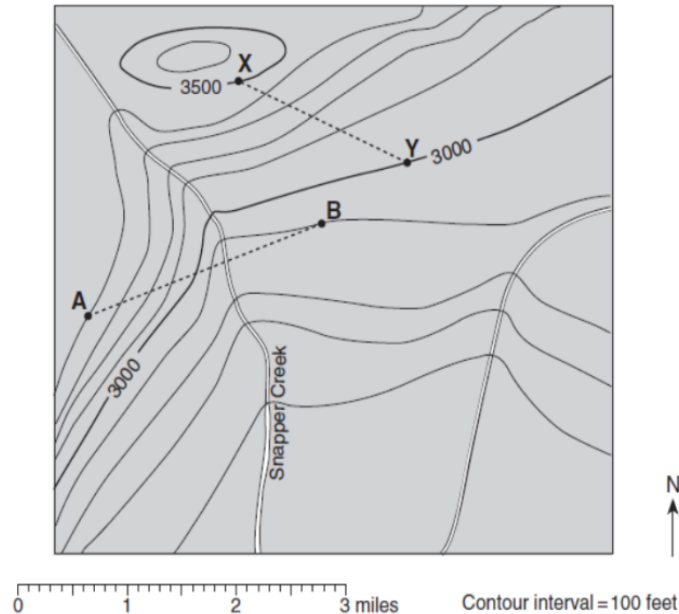


Topographic Map Reading Worksheet

Use the following topographic map to answer questions 1-8.



1. What is the elevation at point A? _____
2. What is the elevation at point B? _____
3. What is the elevation at the point on line A-B where it crosses Snapper Creek?

4. If you walked from point A to point B along line A-B, would you be walking downhill or uphill, or both? In what direction would you be walking? Explain your answer, stating the elevations at point A, Snapper Creek and point B.

5. What is the elevation of the highest point shown on the map? _____
6. What is the elevation at point X? _____
7. What is the elevation at point Y? _____
8. If you walked from point X to point Y along line X-Y, would you be walking downhill or uphill, or both? In what direction would you be walking? Explain your answer, stating the elevations at point X and point Y. _____

